



Figure 1. The implant on #11 was detected on buccal aspect (seen by arrow)

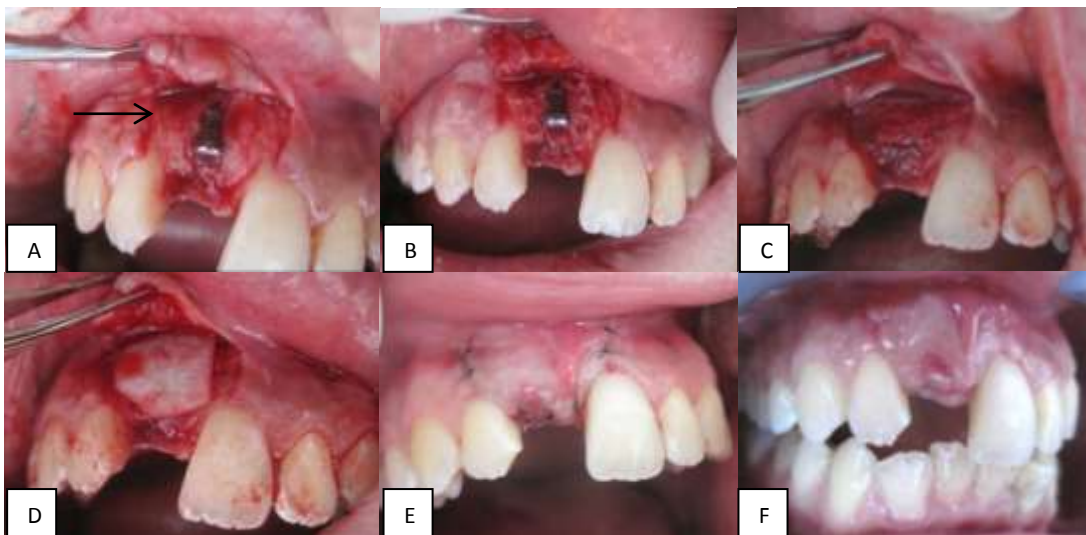


Figure 2. A. The implant tread on #11 was seen when the flap is raised. There was bone loss at the buccal area (seen by arrow) B. Implant was cleaned and de-cortexization procedure was done on the bone surrounding the implant. C. Bone graft materials BCP was placed on the outer layer and DFDBA on the inner layer of the defect. D. Collagen membrane was used to cover the graft. E. Flap was repositioned back and sutured using Nylon 5.0. F. Two weeks after surgery.

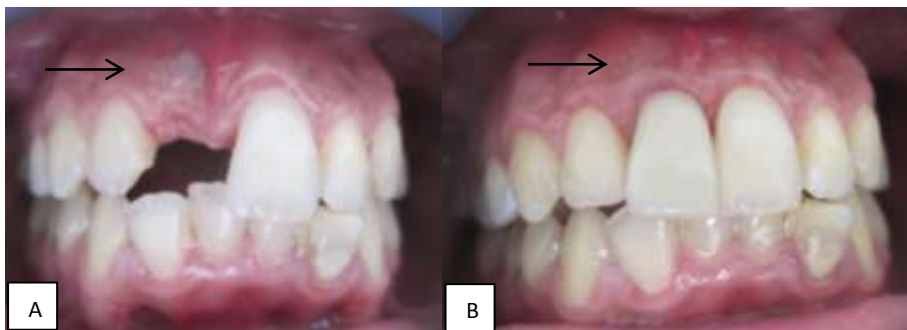


Figure 3. A. Patient's first visit. B. Twelve months follow-up post-surgery.